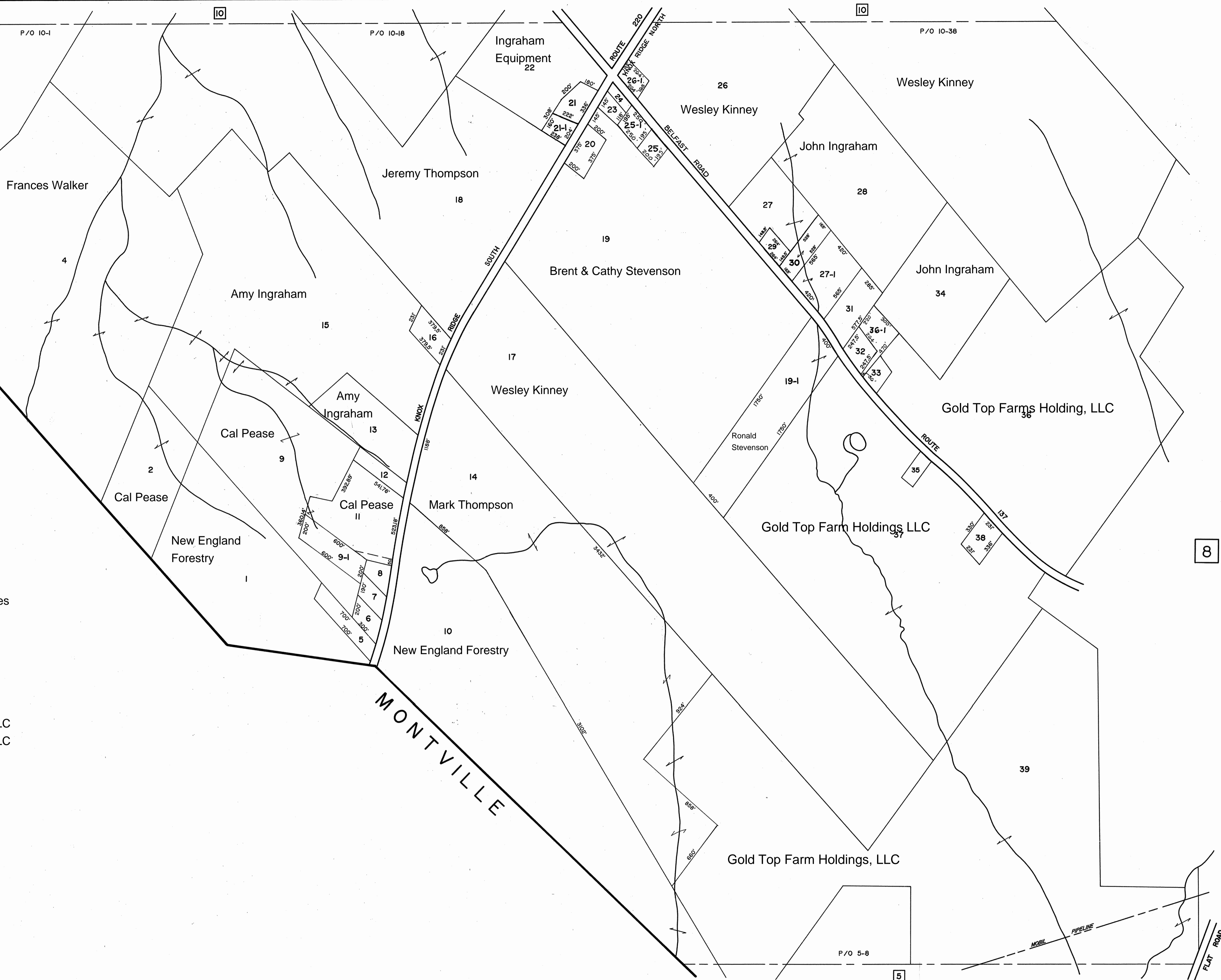


FREEDOM

MONTVILLE

8

- 7-5 John Barnstein
- 7-6 Albert Remsen
- 7-7 Ruth Tyler Cross Trust
- 7-8 Ruth Tyler Cross Trust
- 7-9-1 Steve Spaulding
- 7-12 Amy Ingraham
- 7-16 William Ingraham
- 7-20 Mark hall
- 7-21 Ingraham Equipment
- 7-21-1 Joan Sheldon
- 7-23 Clinton Holmes
- 7-24 Ross Merry & Rhonda Hawes
- 7-25 Randy Stevenson
- 7-25-1 Randy Stevenson
- 7-26-1 Wesley Kinney
- 7-29 Donna LaBranche
- 7-30 Rodney Downer, II
- 7-32 George Ingraham
- 7-33 Gold Top Farms Holding, LLC
- 7-35 Gold Top Farms Holding, LLC
- 7-36-1 George Ingraham
- 7-38 Michael Ingraham



TAX MAPS ARE NOT SURVEYS. THEY ARE COMPILED FROM AERIAL PHOTOGRAPHY, EXISTING SURVEYS, DEEDS, AND LAND OWNERS DESCRIPTIONS. THEY ARE TO BE USED ONLY FOR ASSESSMENT PURPOSES, AND NOT FOR CONVEYANCES.

DATE OF AERIAL PHOTOGRAPHY APRIL 19, 1991
 DATE OF MAP COMPLETION APRIL 1, 1992
 MAP SCALE 1 INCH = 400 FEET

LEGEND
 PARCEL NUMBERS 2
 MATCH LINE
 ADJACENT MAPS 3

TAX MAP
TOWN OF KNOX
 WALDO COUNTY, MAINE

MAP NUMBER

7